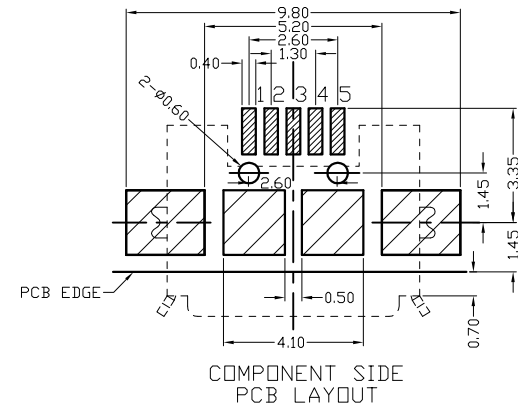
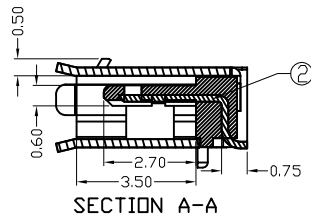
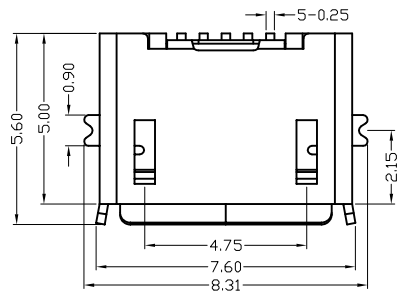


1 2 3 4 5 6 7

A

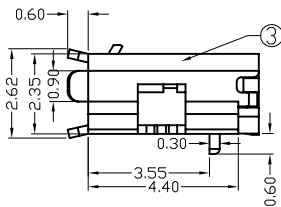
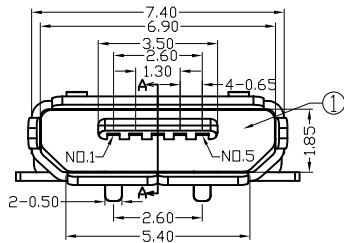


A

B

B

C



Specification:

***Contact Resistance:**

- (1)30m Ohm Max. at 100mA
- (2)10,000 Cycles After: 40m Ohm Max.at 100mA

***Rated Voltage: AC 30V**

***Contact Current Rating:**

- (1)Signal Line: 1A/Pin (No. 1 to 5)
- (2)2-Line For Power: 1.8A/Pin(No. 1 and 5),0.5A/Pin(No. 2 to 4)

***Insulation Resistance: 100M Ohm Min. At 500V DC**

***Dielectric Withstanding Voltage: 100V AC for 1 Minute**

***Durability (Life Test): 10,000 Cycles Front**

***Insertion Force: 35 Newton Maximum**

***Extraction Force: 8 Newton Minimum.**

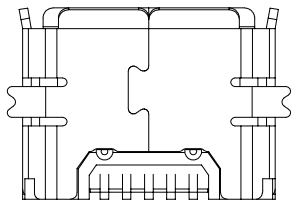
***Operating Temperature: -30°C± +80°C**

***Solderability: 255°C±5°C;5 Sec**



D

D



E

E

NO	NAME	MATERIAL	FINISH	Q'TY	REMARK
1	HOUSING	LCP+GF30%	BLACK	1	
2	PIN TERM.	PHOS.BRONZE(G10) 1420mm	GOLD PLATED	5	Contact Gold: 30u' OTHER AREA Gold: 1u'
3	SHELL	STAINLESS T=025	NICKEL PLATED	1	Ni: 80-120u'

尚益科技有限公司

JMSCONN TECHNOLOGY CO., LTD.

PROJ		SCALE : F DO NOT SCALE DWG	MOLD NO 20084-S3
APP			MODEL
CHK	HSIEH	2011.02.09	FILE NO
DGN	HSIEH	2011.02.09	REV. X1
DRW	HSIEH	2011.02.09	UNIT MM
			SHT 1 OF 1
			SIZE A4

1 2 3 4 5 6 7