

1 2 3 4 5 6 7

A

B

C

D

E

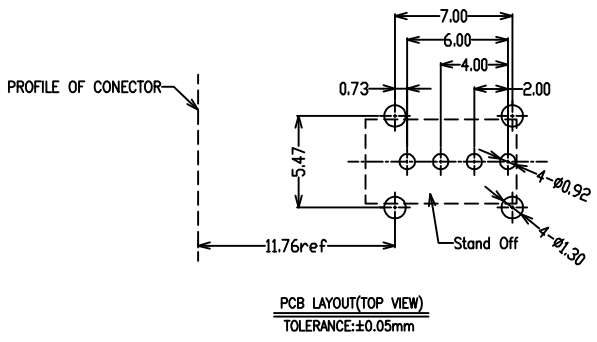
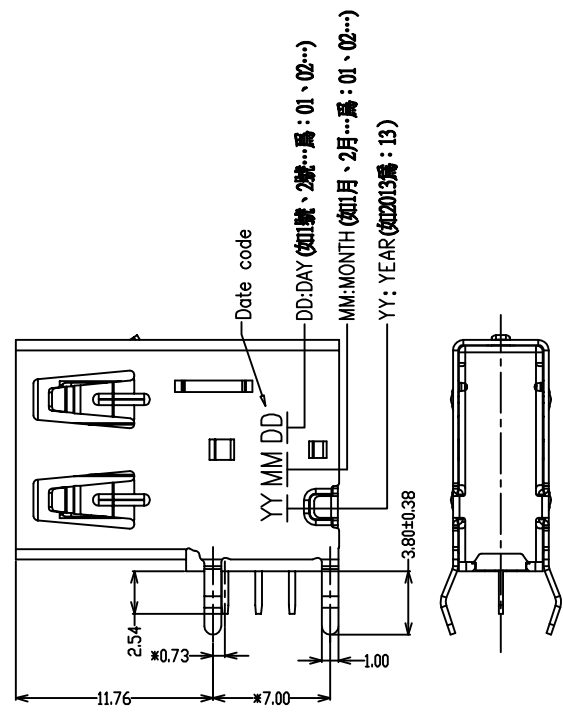
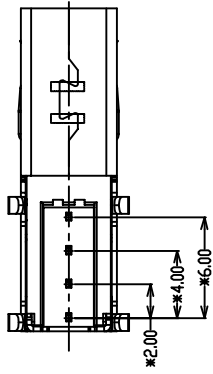
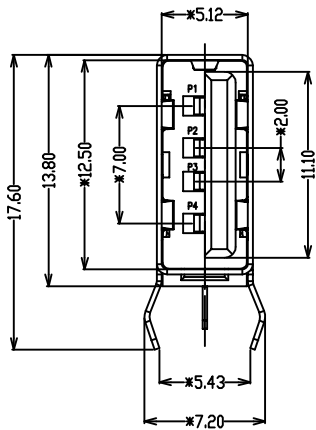
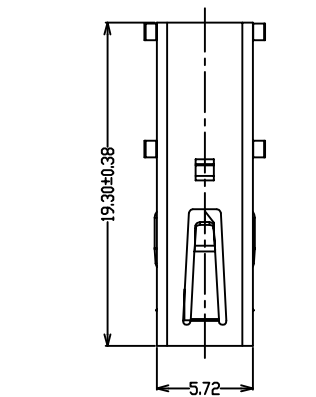
A

B

C

D

E



NOTES:

1. MATERIAL:
 - 1.1 HOUSING: LCP,UL94 V-0, COLOR: BLACK.
 - 1.2 Cover: LCP,UL94 V-0, COLOR: BLACK.
 - 1.3 CONTACTS: BRASS T=0.25mm
 - 1.4 SHELL: SUS304 T=0.30mm
2. PLATING:
 - 2.1 CONTACTS: NICKEL(50u"MIN.) UNDERPLATING OVERALL
TIN(100u"~200u") PLATING ON SOLDER AREA
AU(30u") PLATING ON CONTACT AREA
 - 2.2 SHELL: NICKEL(50U") PLATING OVERALL
Tin(100u"~200u") SOLDER AREA
3. SPECIFICATION:
 - 3.1 CONTACT CURRENT RATING: 1.5 Amp
 - 3.2 DIELECTRIC WITHSTANDING VOLTAGE: AC 500V r.m.s.
 - 3.3 INSULATION RESISTANCE: 1000MΩ MIN. at DC 500V
 - 3.4 OPERATING TEMPERATURE: -40°C to +85°C
4. MECHANICAL:
 - 1).Mating Force:3.5Kgf(35N) Max.
 - 2).Unmating Force:1.0Kgf(10N)~3.5Kgf(35N)
 - 3).Durability: 5000 Cycles
5. 重點標示尺寸: "*"

PART No.	HOUSING COLOR	CONTACT PLATED
20020-TN	BLACK	Au(30u")/Tin PLATING

尚益科技有限公司 JMSCONN TECHNOLOGY CO., LTD.				
PROJ		SCALE : F DO NOT SCALE DWG	MOLD NO 20020-TN	
APP			MODEL	FILE NO
CHK				REV. X1
DGN			UNIT	SIZE A4
DRW	HSIEH	2016.11.16	MM	SHT 1 OF 1

1 2 3 4 5 6 7