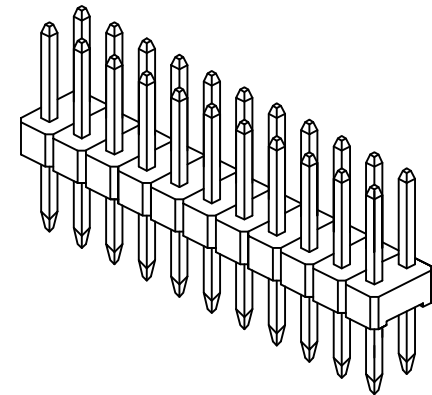
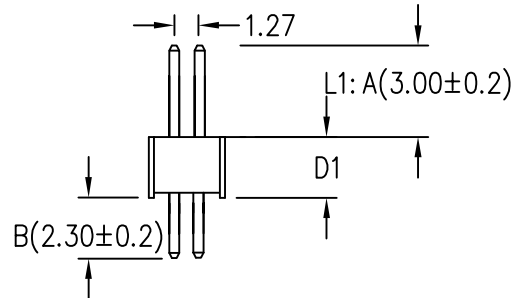
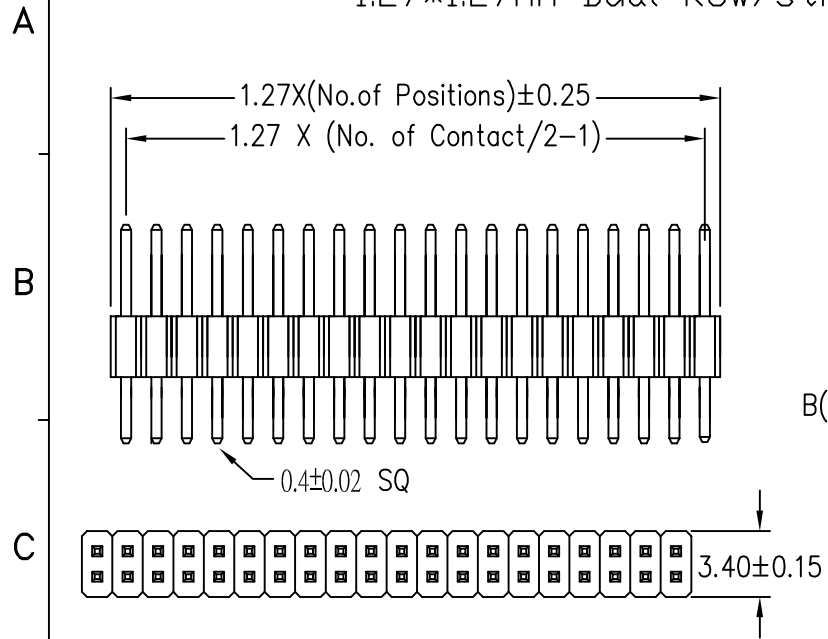
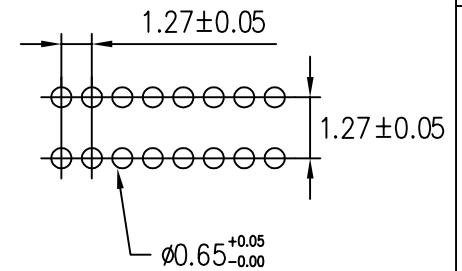


# PIN HEADER

1.27\*1.27mm Dual Row/Straight



P.C.B Board Layout



11700-2 X ?? -S -D1 -L1  
 Pin  
 Length: L1: A: 3.0mm / B: 2.3mm  
 Height: D1: 1.10mm  
 D2: 1.50mm  
 D3: 2.50mm  
 S: Straight Type  
 No of Contacts 10~100  
 Dual Row

## SPECIFICATIONS

CURRENT RATING: 1AMP  
 INSULATOR RESISTANCE: 5000MΩMIN  
 DIELECTRIC WITHSTANDING: AC 500V  
 OPERATING TEMPERATURE: -40°C ~ +105°C  
 CONTACT MATERIAL: PHOSPHOR BRONZE OR BRONZE  
 INSULATOR MATERIAL: POLYESTER UL94V-0  
 NYLON-6T

FINISH: GOLD FLASH

尚益科技有限公司

JMSCONN TECHNOLOGY CO., LTD.

PROJ		SCALE : F DO NOT SCALE DWG	MOLD NO	11700	
APP			MODEL	FILE NO	REV. X1
CHK					
DGN			UNIT	SHT 1 OF 1	SIZE A4
DRW	HSIEH	2016.11.27	MM		

1

2

3

4

5

6

7