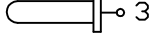
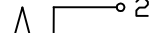

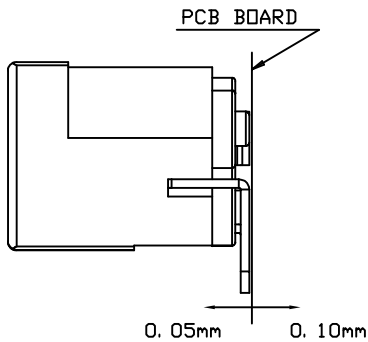
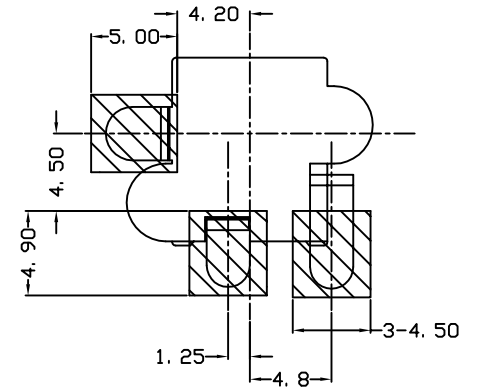


	PIN#	DIA.	TOLER.
	3		
	35253	2.00	+0.0 -0.1
	35303	2.50	+0.0 -0.1

SCHEMATIC

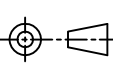


COPLANARITY

Specifications:

- Insulation Resistance: 100MΩhms min. (initial)
- Contact Resistance (initial): 30mΩ max at 100mA (max) 1KHz.
- Dielectric Withstand Voltage: Ac 500V, 50 to 60Hz for 1 minute.
- Endurance: 5,000 Cycles
10~20 cycles per minute.
- Rated Voltage: 13.5 Volts DC.
- Rated Current: 2.5 Amps DC.
- Operating Temp: -25 to +85 deg. C.

尚益科技有限公司
JMSCONN TECHNOLOGY CO., LED.

PROJ		SCALE : F DO NOT SCALE DWG	MOLD NO	35253-07	
APP			MODEL	FILE NO	REV.
CHK	CCJ	90.10.02	2.0mm	DC JACK	X1
DGN	AMY	90.10.02	UNIT	SHT 1 OF 1	SIZE
DRW	SHIEH	90.10.02	MM		A4