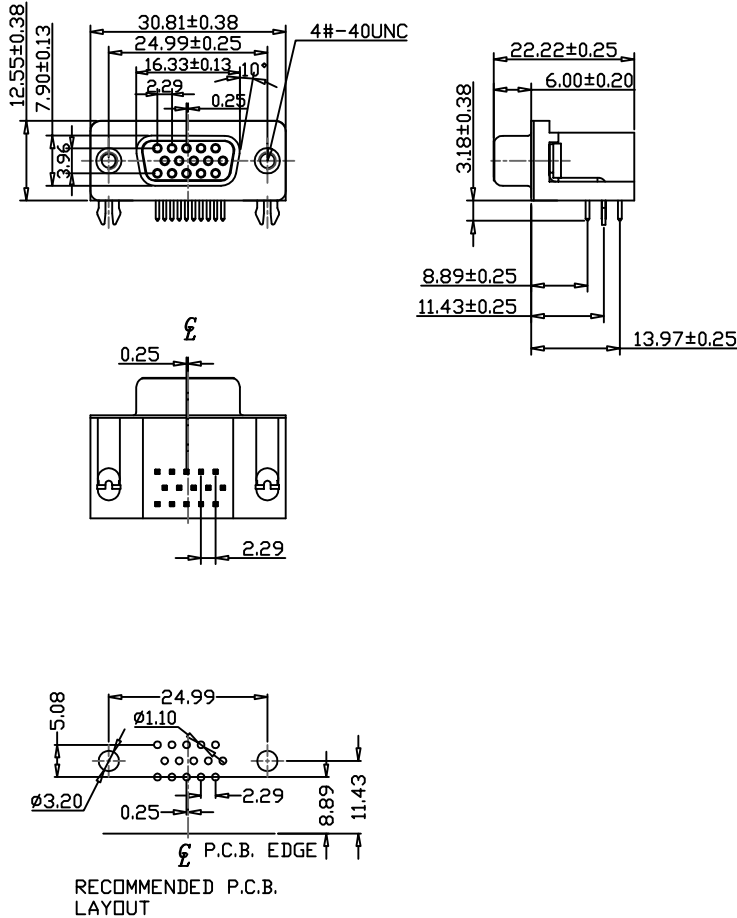


1 2 3 4 5 6 7

A  
B  
C  
D  
E



**SPECIFICATIONS**

**ELECTRICAL CHARACTERISTICS:**

Contact Current Rating:3 Amperes.  
Dielectric Withstanding Voltage: AC 1000/60sec.r.m.s.  
Insulation Resistance:5000 Medohms Minimum.at DC 500V.  
Contact Resistance:25 Milliohms Maximum.  
Operating Temperature:-55°C to+105°C.

**MECHANICAL CHARACTERISTICS:**

Contact Insertion Force:341 g.Maximum.  
Contact Separation Force:21 g.Minimum.

**MATERIALS:**

Contacts:Brass.  
Insulator: PBT UL 94V-0 Rated.  
Shell: Cold Roller Steel.

**FINISHES:**

Contact:Gold Flash.  
Shell:Nickel Plated.

20341-XXX-Y-XXX-X

- SERIES NO. \_\_\_\_\_
- D-SUB CONNECTOR
- HIGH DENSITY RIGHT ANGLE
- 8.89mm FOOTPRINT
- NUMBER OF POSITION \_\_\_\_\_
- 15: 15-POSITIONS
- 26: 26-POSITIONS
- 44: 44-POSITIONS
- 62: 62-POSITIONS
- 78: 78-POSITIONS
- CONTACT STYLE \_\_\_\_\_
- S: SOCKET
- P: PLUG
- CONTACT FINISH \_\_\_\_\_
- 0: FULL GOLD
- 1: FLASH GOLD
- 2: 15u" GOLD
- 3: 30u" GOLD
- FRONT SHELL FINISH \_\_\_\_\_
- 0: ZINC CHROMATED
- 1: TIN/LEAD OVER NICKEL
- 2: NICKEL
- COLOR STYLE \_\_\_\_\_
- 1: BLACK(STANDARD)
- 2: FOR PC99 FOLLOW PANTONE COLOR
- FLANGE MOUNTING OPTION \_\_\_\_\_
- 0: #4-40 THREADED HOLE
- 1: #4-40 THREADED HOLE WITH #4-40UNC SCREWLOCK INSTALLED
- 2: #4-40 THREADED HOLE WITH #4-40UNC SCREWLOCK BULK-PACKED
- 3: #3.05mm CLEAR HOLE
- 4: M3 THREADED HOLE
- 5: M3 THREADED HOLE WITH M3 SCREWLOCK INSTALLED
- 6: M3 THREADED HOLE WITH M3 SCREWLOCK BULK-PACKED
- 7: #4-40 THREADED SCREWLOCK CLINCHED-MOUNT INSTALLED
- 8: SPECIAL SCREW AVAILABLE
- BOARD MOUNTING OPTION \_\_\_\_\_
- 0: NONE
- 1: #3.05mm CLEAR HOLE
- 2: #4-40 THREADED HOLE
- 3: 2-FINGER BOARDLOCK
- 4: 4-FINGER BOARDLOCK

尚益科技有限公司  
JMSCONN TECHNOLOGY CO., LTD.

PROJ		SCALE : F DO NOT SCALE DWG	MOLD NO 20341-15S01212
APP			MODEL
CHK			FILE NO
DGN			REV. X1
DRW	HSIEH	2009.03.06	UNIT MM
			SHT 1 OF 1
			SIZE A4

1 2 3 4 5 6 7